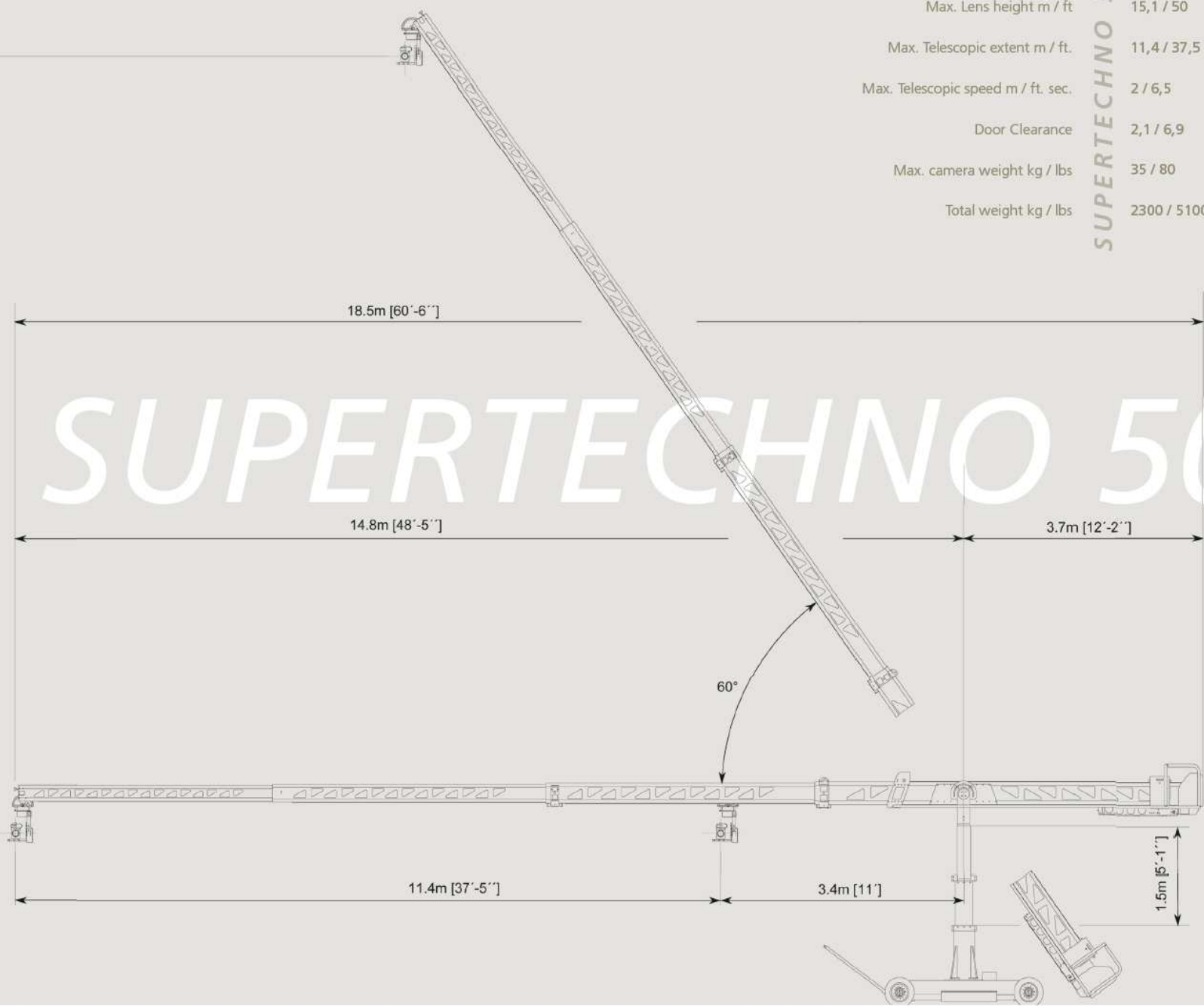


15.1m [50']



SUPERTECHNO 50

SUPERTECHNO 50

Max. Lens height m / ft	15,1 / 50
Max. Telescopic extent m / ft.	11,4 / 37,5
Max. Telescopic speed m / ft. sec.	2 / 6,5
Door Clearance	2,1 / 6,9
Max. camera weight kg / lbs	35 / 80
Total weight kg / lbs	2300 / 5100

18.5m [60'-6"]

14.8m [48'-5"]

3.7m [12'-2"]

60°

11.4m [37'-5"]

3.4m [11']

1.5m [5'-1"]